

TDS 160301

RANGE
40 - 100kW

**ATLANTIC
BOILERS**
HIGH EFFICIENCY CONDENSING BOILER-PLANT

VF SERIES

GAS CONDENSING BOILERS

4 Models: 40kW / 60kW / 80kW / 100kW

Stainless steel heat exchanger

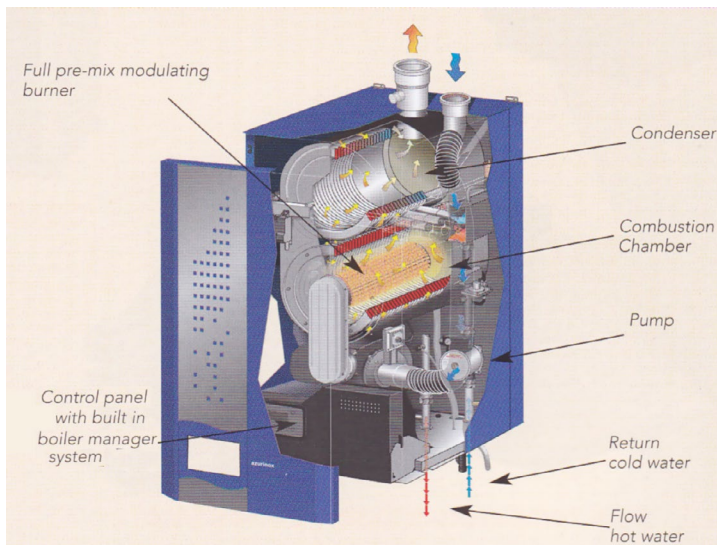
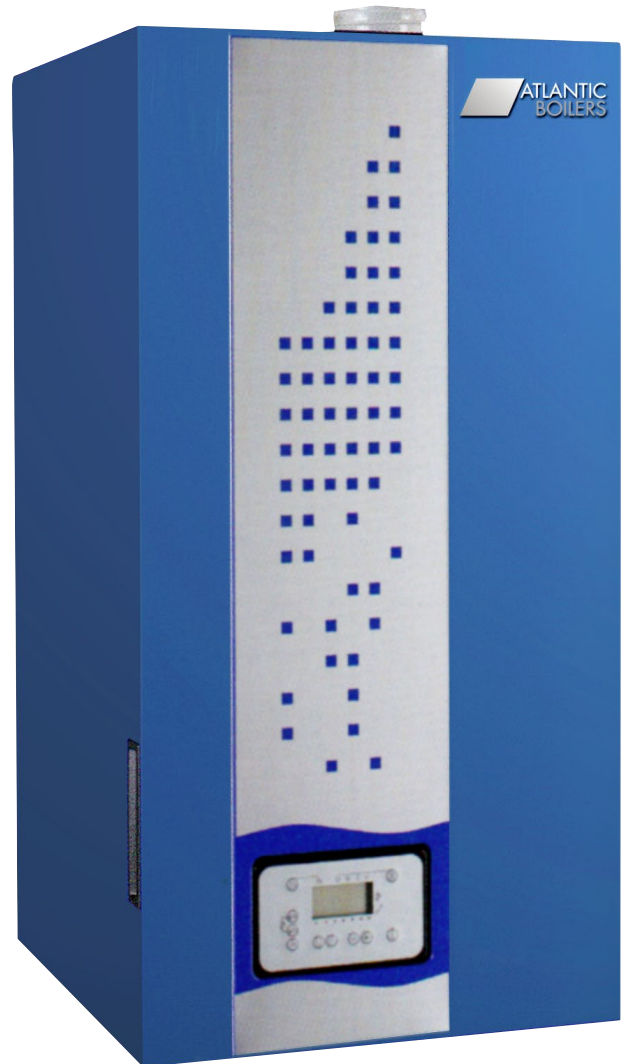
Pre-mix modulating burner from 25 to 100% circulator built into the boiler

Low emissions (NOx class 5)

Built-in boiler manager system

Flue connections
B23/B23P/C13/C33/C53

Powered with natural gas or propane (Versions B23/B23P only)



CE EFFICIENCY TEST FIGURES

50°C flow/30°C return

99.3% gross efficiency 109.3% net efficiency

80°C flow/ 60°C return

87.7% gross efficiency 96.9% net efficiency

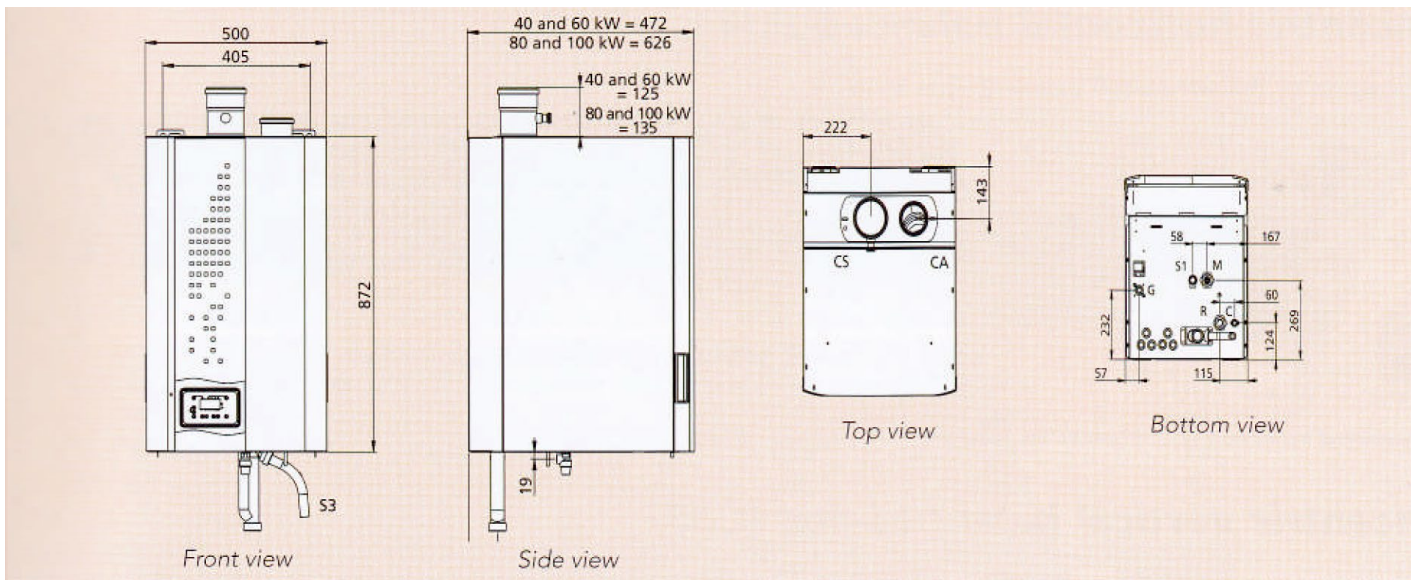


**Guarantee 3 years
Heat exchanger**

FOR TECHNICAL HELP/ADVICE Call 0161 621 5960
or email info@atlanticboilers.com

FOR FULL PRODUCT RANGE & LITERATURE
Visit www.atlanticboilers.com

ATLANTIC BOILERS, PO BOX 11, ASHTON UNDER LYNE, OL6 7TR T: 0161 621 5960 E: info@atlanticboilers.com www.atlanticboilers.com



PERFORMANCE

Model	VF40	VF60	VF80	VF100
Max. rated power in kW at 80/60°C	40	56.6	80	92.6
Max. rated power in kW at 50/30°C	44	61.8	87	100
Min. useful power in kW	12.9	14.9	26.3	26.3
Weight kg	66	73	88	88
Water capacity litres	4.6	6.1	9.4	9.4



Header kit

DIMENSIONS & CONNECTIONS

Model	VF40	VF60	VF80	VF100
R	G 1"	G 1"	G 1" ¼	G 1" ¼
M	G 1"	G 1"	G 1" ¼	G 1" ¼
G	G ¾"	G ¾"	G ¾"	G ¾"
C	G ½"	G ½"	G ½"	G ½"
S1	½"	½"	½"	½"
CA	ø 80	ø 80	ø 80	ø 80
CS	ø 80	ø 80	ø 100	ø 100
S3	ø 22	ø 22	ø 22	ø 22

HYDRAULIC KIT

The hydraulic kit for the boiler alone includes the following parts:

- Header kit
- A drain down valve
- A pressure gauge

Important note: this kit is not mandatory, but the boiler must be installed with a hydraulic decoupling bottle designed according to the good engineering practice

SUPPLIED AS STANDARD WITH:

- Pre-mix modulating burner (G20/G25 and propane)
- Control panel
- Safety thermostat
- Gas valve
- Condensate drain
- Air differential pressure switch
- Ignition electrode
- Ionisation electrode for flame control
- Smoke temperature sensor
- Water outlet temperature sensor
- Water inlet temperature sensor
- Water differential pressure switch
- Water pressure switch
- Non-return valve
- Automatic purge
- Security valve
- Working pressure 4 bar

The corresponding kits must be ordered for a chimney or balanced-flue connection

The boiler is delivered in a secured package



HIGH EFFICIENCY CONDENSING BOILER-PLANT

FOR TECHNICAL HELP/ADVICE

Call 0161 621 5960

or email info@atlanticboilers.com

FOR FULL PRODUCT RANGE & LITERATURE

Visit www.atlanticboilers.com

PO BOX 11, ASHTON UNDER LYNE, OL6 7TR

T: 0161 621 5960 E: info@atlanticboilers.com

www.atlanticboilers.com