

RANGE
36 - 72kW

MULTI-ELEC

"COMPACT" ELECTRIC BOILER

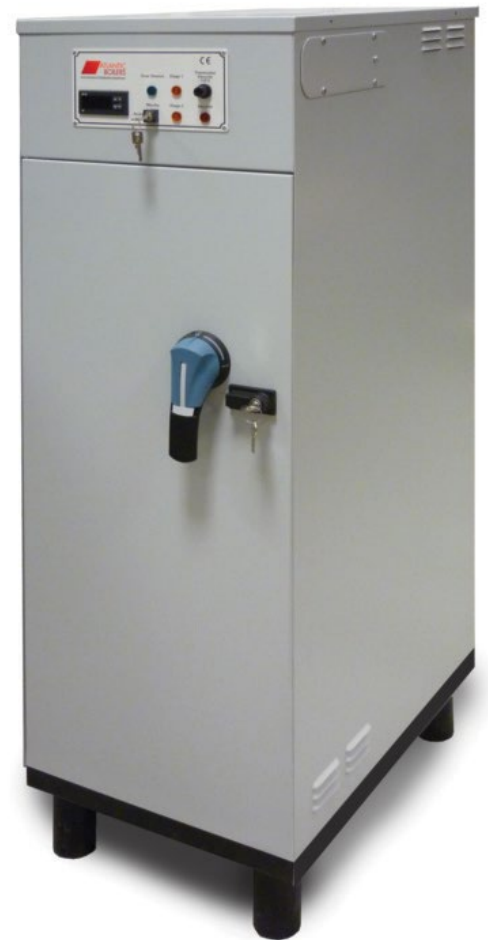
4 Models: 36kW / 48kW / 60kW / 72kW

For closed heating systems
Maximum Working Pressure 7BARS

Maximum flow temperature 95°C

Carbon Steel body, 50mm rockwool thermal insulation

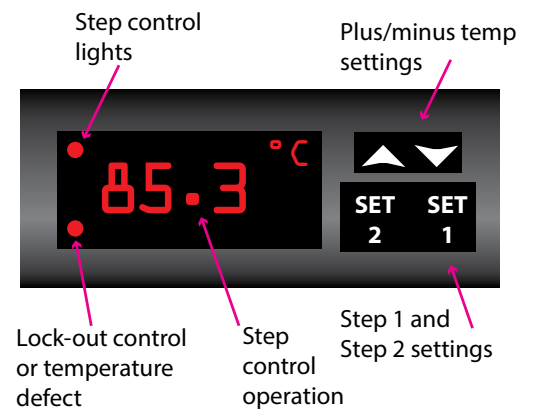
Made to IP21/IK08, Directive 2006/95/CEE & BS EN 60335-1, C73800



Model	36	48	60	72
Maximum Output kW	36	48	60	72
Amps per phase	56	75	94	112
Dry weight kg	120	122	124	126
Footprint mm	400mm x 600mm			
DIMENSIONS				
Depth mm	690	690	690	690
Width mm	410	410	410	410
Height mm	1240	1240	1240	1240
Access front mm	1000	1000	1000	1000
Access side1 mm	500	500	500	500
Access side 2 mm	100	100	100	100
Access back mm	500	500	500	500
Height 1240mm +	700	700	700	700

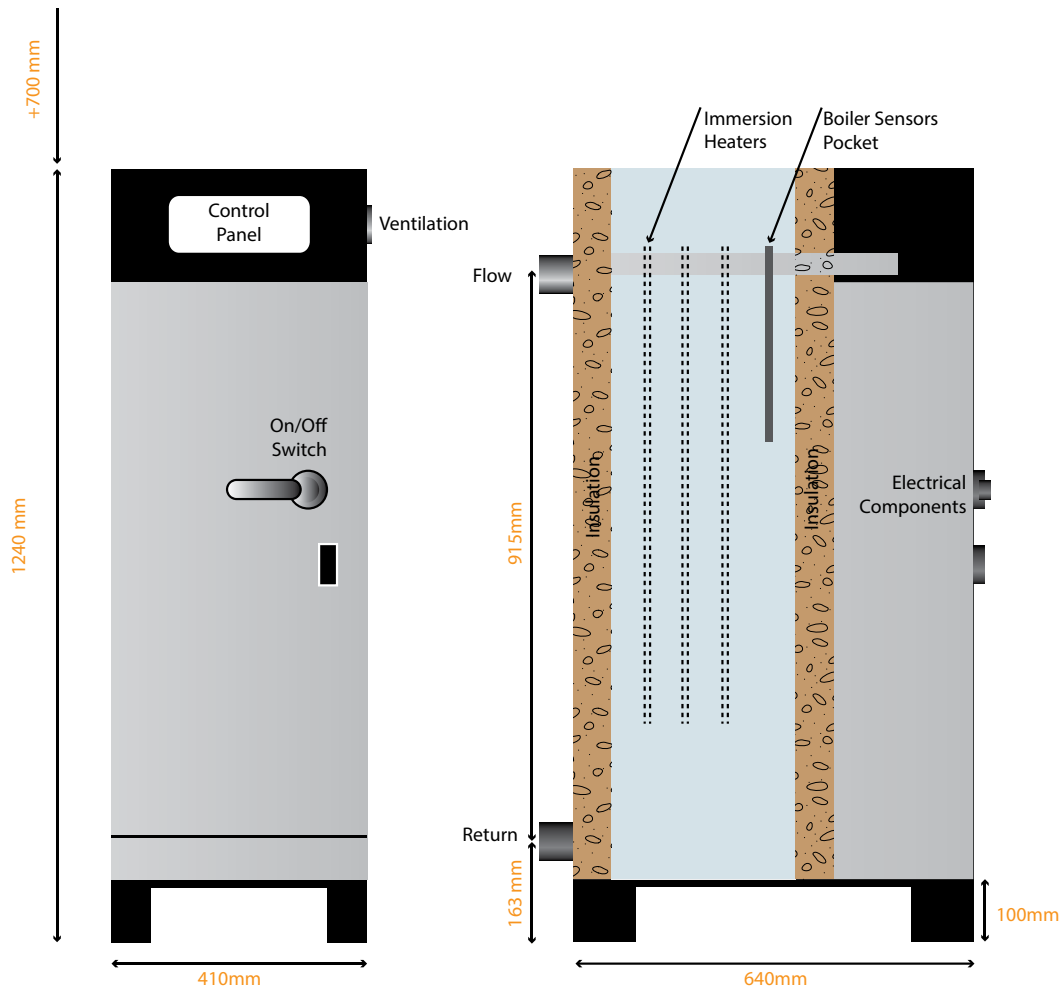
ELECTRICAL POWER REQUIREMENTS - 415V, 3 PHASE, 50Hz					
COMPACT		36	48	60	72
STEP ONE	Fuse amps	50	50	63	63
	Power kW	24	24	36	36
STEP TWO	Fuse amps	25	50	50	63
	Power kW	12	24	24	36

DETAILS OF CONTROLLER



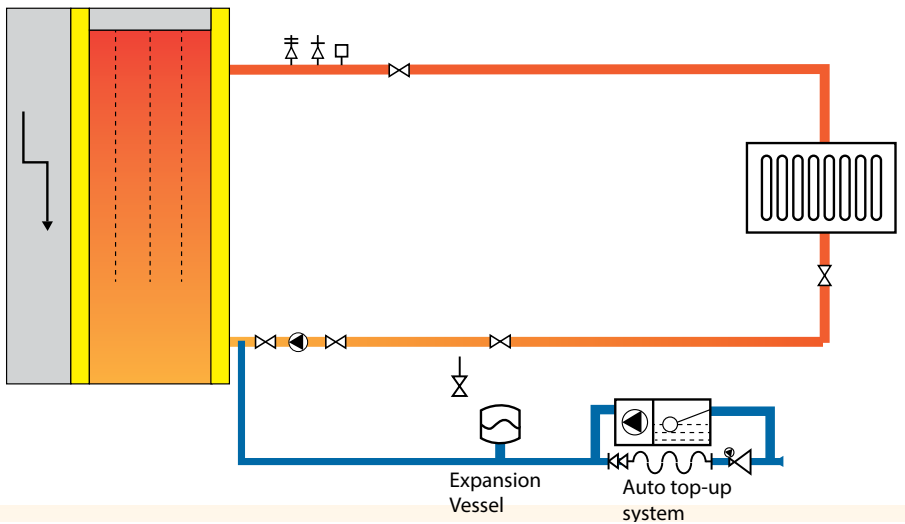
FOR TECHNICAL HELP/ADVICE Call 0161 621 5960
or email info@atlanticboilers.com

FOR FULL PRODUCT RANGE & LITERATURE
Visit www.atlanticboilers.com



TYPICAL HEATING SYSTEM:

Conventional radiator system, with or without weather compensation



Components of the Multi-elec 'Compacte' boiler

- Control panel
- Ventilation louvre
- Boiler heating flow
- Boiler flow sensor
- Boiler immersion heaters
- Thermal insulation
- Boiler heating return
- Main electrical power input
- Electric switch gra
- Digital temperature controller
- Main electrical isolating switch



BREAKSPEAR HOUSE

Breakspeare House in Harefield, Middlesex is a magnificent Grade I listed building. Phase 1 of the development consisted of the main building being converted into 9 luxury apartments. Ideal for each of these highly insulated rooms were the Atlantic Multi-Elec Compacte boilers each rated at 36kW. These units are robustly made to a working pressure of 4BARS and temperatures from 40°C to 95°C. The boilers were ideal for the luxury surroundings with silent operation and no flue requirement to cause difficulties in the development of the Grade I listed building.