

TDS 160303

RANGE

150 - 1430kW

TT TURBO TOTALECO

FAN-POWERED FLUE ADD-ON
CONDENSING ECONOMISER

4 Models: 500kW / 620kW / 940kW / 1430kW

Simple flue add-on

Overall efficiency above above 97% GCV

In-built fan assists boiler

Ideal for dual-fuel applications

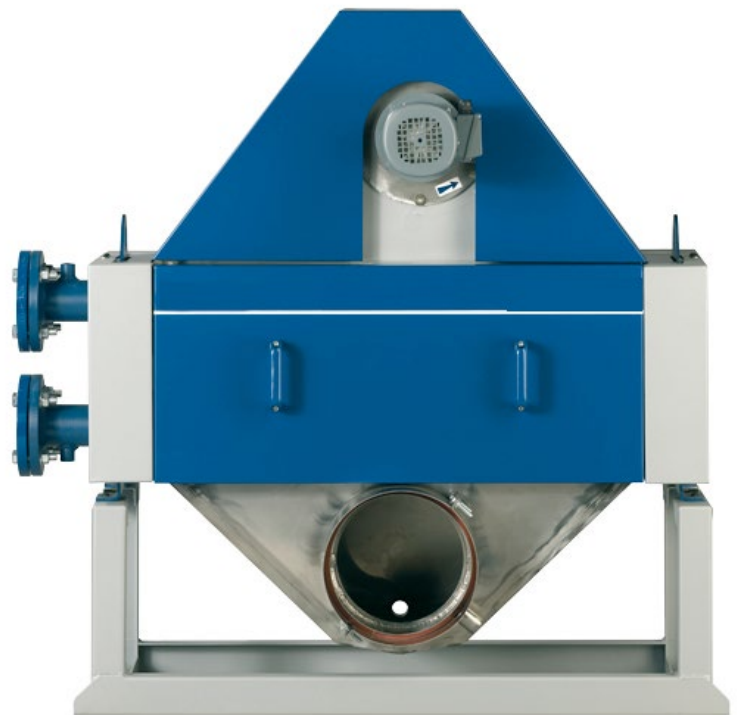
SPECIFICATION

The Turbo Totaleco heat exchanger is constructed so that all components in contact with the products of combustion or the condensate are manufactured from the austenitic stainless steel using chromium, nickel and molybdenum. The products of combustion are initially drawn into a steel chamber enclosing an austenitic stainless steel impeller of a centrifugal fan. The chamber is clad in thermal insulation and sound-proofing.

The fan is direct driven by a 3-phase motor mounted externally to the chamber. The products of combustion then pass through a battery of perfectly smooth austenitic stainless steel tubes with a consequent lowering in temperature the production of condensate.

The battery is manufactured for a working pressure of 4BARS or 6BARS with a test pressure of 6BARS or 9BARS. The pipework connections are flanged and fitted with safety valve a drain connections. The outlet chamber is entirely constructed of austenitic stainless steel and is fitted with a condensate drain for PVC connection.

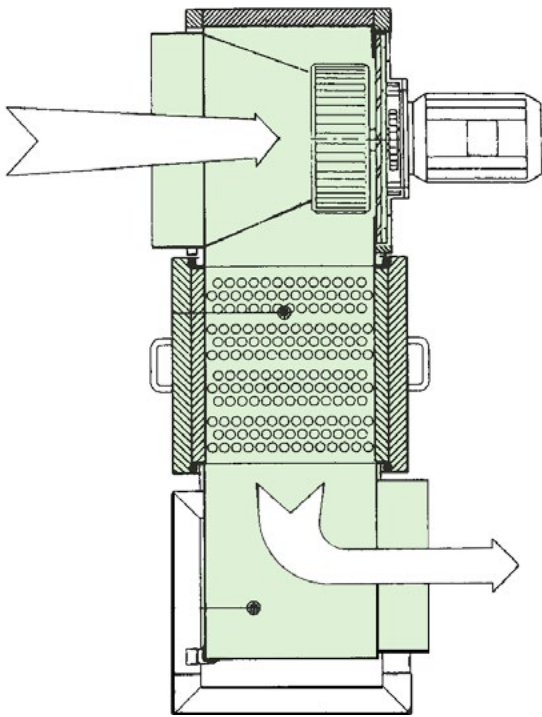
The Turbo-Totaleco is enclosed in a reinforced sheet steel casing having two preparation treatments before being enamel painted and oven baked to 200°C to produce a guaranteed high quality finish, insulation is provided overall by a 40mm thick glass silk blanket.



The condensing heat exchanger can be provided with a separately mounted starter control box and a water flow switch. The **control box** incorporates connections for a three phase supply, the centrifugal fan motor, the water flow switch, boiler/burner operation contacts and fan motor lock out.

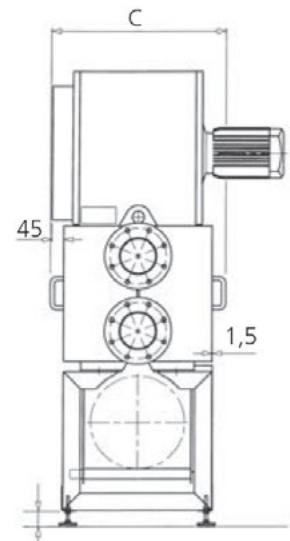
FOR TECHNICAL HELP/ADVICE Call 0161 621 5960
or email info@atlanticboilers.com

FOR FULL PRODUCT RANGE & LITERATURE
Visit www.atlanticboilers.com



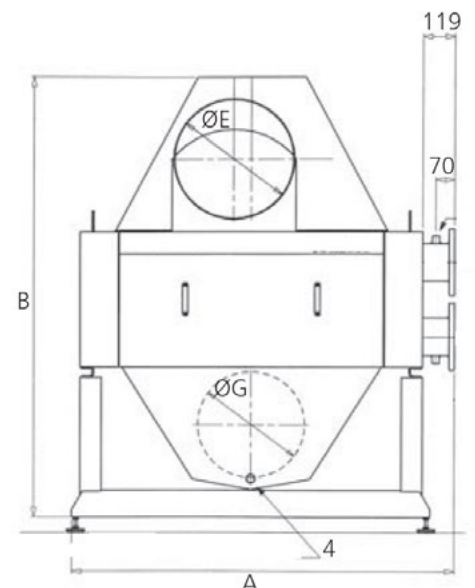
PERFORMANCE

| Model | 3TT | 4TT | 7TT | 10TT |
|-------------------------|------|------|------|------|
| Boiler range Max kW | 400 | 620 | 940 | 1430 |
| Water flow (ltr/sec) | 4.7 | 7.2 | 10.8 | 16.7 |
| Pressure drop (kPA) | 12.0 | 12.0 | 24.0 | 29.0 |
| Min (kW) | 150 | 400 | 620 | 940 |
| Water flow (ltr/sec) | 1.7 | 2.2 | 3.3 | 5.3 |
| Pressure drop (kPA) | 1.7 | 1.4 | 2.4 | 3.0 |
| Dry weight (kg) | 290 | 305 | 375 | 505 |
| Water content (ltrs) | 34 | 40 | 51 | 86 |
| Min water pressure | 1 | 1 | 1 | 1 |
| Standard water pressure | 4 | 4 | 4 | 4 |



DIMENSIONS & CONNECTIONS

| Model | 3TT | 4TT | 7TT | 10TT |
|--------------------------------|------|------|------|------|
| B Height mm | 1245 | 1540 | 1675 | 1810 |
| A Width mm | 1245 | 989 | 1310 | 1427 |
| C Depth mm | 538 | 538 | 538 | 538 |
| Flue Inlet mm | 1025 | 1250 | 1355 | 1450 |
| E Flue inlet diameter mm | 250 | 350 | 400 | 450 |
| Flue Outlet mm | 270 | 300 | 330 | 350 |
| G Flue Outlet diameter mm | 250 | 300 | 350 | 400 |
| Water inlet mm | 493 | 567 | 622 | 680 |
| Water outlet mm | 224 | 306 | 306 | 280 |
| Option flue outlet mm | 262 | 292 | 347 | 336 |
| Option flue outlet diameter mm | 200 | 250 | 250 | 350 |
| Water connections mm | 65 | 100 | 100 | 125 |
| Safety valve connections mm | 15 | 15 | 15 | 15 |
| Drain connection mm | 15 | 15 | 15 | 15 |
| PVC condensate outlet mm | 32 | 32 | 32 | 32 |



FOR TECHNICAL HELP/ADVICE Call 0161 621 5960
or email info@atlanticboilers.com

FOR FULL PRODUCT RANGE & LITERATURE
Visit www.atlanticboilers.com